

## ADDENDUM NO. 2

### Rowland Unified School District

### Alvarado Intermediate School Partial Modernization

HWA Proj. No.108RSD13

DSA No. 03-112358

The following changes, omissions, and/or additions to the Specifications and/or drawings shall apply to proposals made for and to the execution of the various parts of the Work affected thereby, and all other conditions shall remain the same.

Careful note of Addendum shall be taken by all parties of interest so that the proper allowances may be made in strict accordance with the Addendum, and that all trades affected shall be fully advised in the performance of the Work which will be required of them.

In case of conflict between Drawings, Specifications, and this Addendum, this Addendum shall govern.

### ADDM. ITEMS

---

#### GENERAL

1. In lieu of all plan description, all new walk-off mats shall be Owner Furnished, Contractor Installed items (O.F.C.I.). Refer to attached drawing AD2-A2, dated March 7, 2011 for typical sizes and locations of new walk-off mat.
2. Contractor shall provide solid blocking behind each marker board as required in each science classroom. Contractor shall verify all dimensions and location with Owner prior to installation.
3. Remove all existing guardrails at existing drinking fountains at east wall of Bldg. C-1 and Bldg. C-3.
4. Remove and reinstall existing drinking fountains for new work at South wall of Bldg. C-2 and C-5. (See attached drawing AD2-A9, dated March 7, 2011)
5. Replace all existing guardrails with new at existing drinking fountain at south wall of Admin. Bldg. AL and Bldg. C-2 for new paving work. (See attached drawing AD2-A9, dated March 7, 2011)
6. Protect in place existing drinking fountain unit and existing guardrails at West wall of Bldg. C-4.
7. Contractor shall provide typical room ID sign at each classroom door on South side of each Classroom Bldg. C-1, C-3, C-4, C-5, and C-6. (See detail 14B/A-9.2)
8. Replace existing classroom entrance door and frame on South side of science classroom 73 of Bldg. K1-A with new solid core wood door (3'-0" W x 7'-0" H x 1 3/4" THK.) and new hollow metal frame. (Hardware Set #01-LK)
9. In lieu of steel angle support at typical standard student island work station, provide new countertop over 1-1/8" Sturd-I-Floor Plywood, manufactured by Georgia-Pacific or approved equal.
10. Contractor shall furnish eight (8) sets of shop drawings, equipment or material data cut sheet for submittal and review by the Architect, prior to fabrication or delivery of such equipment or material to site.
11. All cabinets or drawers provided by contractor shall be furnished with locksets and keys for each Classroom or Prep. Room.
12. Re-roofing, replacement of existing fascia and all related sheet metal for walkway cover shall be part of the base bid.

## SPECIFICATIONS

### SECTION 08100 - Hollow Metal Doors

13. ADD: This section in its entirety. See attached section, dated March 7, 2011.

### SECTION 10125 - Vinyl Coated Tackboard Panel

14. ADD: At Part 2, 2.01, A.  
"7. Provide aluminum perimeter edge metal, factory prefinished with specified vinyl wall covering, sized to match panel thickness, with 1/4 to 1/2 inch visible return leg dimension."

### SECTION 15050 - Basic Materials and Methods

15. DELETE: At Part 2, 2.01, Piping Schedule "E"  
Paragraph C.1.a in its entirety.
16. REVISE:  
TO READ: Paragraph C.1.c  
"c. 3" and smaller: Schedule 80 polyvinyl chloride 1120, plain end with solvent cement fittings, bell end, ASTM D-1785 and ASTM D-2241, NSF listed. 36" minimum covered required."

17. REVISE:  
TO READ: At Part 2, 2.01, Piping Schedule "D"  
Paragraph E.1.c  
"c. Below grade outside the buildings: Schedule 80 polyvinyl chloride 1120, plain end with solvent cement socket fittings, bell end, ASTM D-1785, NSF listed. 36" minimum covered required."

18. REVISE:  
TO READ: At Part 2, 2.01, Piping Schedule "G"  
Paragraph E.1.c  
"c. Piping below floor slab and outside the buildings: ASTM 2661 Schedule 80 ABS, solvent fittings."

## DRAWINGS

### **CIVIL:**

19. REPLACE: The following sheets with attached Addendum No. 2 revision drawings, dated March 11, 2011.

C-1.0 SITE GRADING AND DRAINAGE PLAN - AREA A  
C-1.1 SITE GRADING AND DRAINAGE PLAN - AREA B  
C-1.2 GRADING AND DRAINAGE ENLARGEMENT PLAN  
C-1.3 GRADING AND DRAINAGE DETAILS  
C-2.0 SITE CONSTRUCTION PLAN - AREA A  
C-2.1 SITE CONSTRUCTION PLAN - AREA B  
C-2.2 SITE CONSTRUCTION ENLARGEMENT PLAN  
C-2.4 SITE CONSTRUCTION DETAILS

### **ARCHITECTURAL:**

20. REPLACE: The following sheets with attached Addendum No. 2 revision drawings, dated March 21, 2011.

A-0.1 SITE DEMOLITION PLAN - AREA A  
A-0.2 SITE DEMOLITION PLAN - AREA B

On SHEET T-1

At General Notes

21. REVISE:  
TO READ: Note #18  
"18. As a condition of final acceptance and final payment, the contractor shall submit to the school district a clean set of drawings indicating all changes or deviations from the contract set of drawings as noted in specifications. They shall be identified as "As Built" drawings and signed and dated by the contractor. In addition, the contractor shall also furnish complete set of operating and maintenance instructions including parts manuals for all equipment of all types bound in a hardboard binder and indexed, and as noted in specifications or general conditions of contract."

On SHEET A-1.0

At Key Notes

22. REVISE:  
TO READ: Note #106  
"106. Replace existing exterior double door for Heater Room 108 with new hollow metal pair door. (3'-0" and 2'-0" Leaves, 6'-10" High, 1-3/4" Thk., Type A, Non-rated, existing frame to remain) (HW #05)."

On SHEET A-1.1

At Key Notes

23. REVISE:  
TO READ: Note #2  
"2. Remove a portion of existing canopy structure including steel column. Remove existing steel columns and footings to a depth at least 6" below the ground surface."

At Note for Walkway Cover Reroofing

24. ADD: "6. Paint all sheet metal work, miscellaneous metal, and wood fascia. Paint all plaster surfaces of the entire walkway canopy system."

At Detail 2 - Typical Walkway Canopy Fascia

25. Attach new select grade spruce 2x10 fascia with 2-10d at 12" o.c.

On SHEET A-2.0

At Ceiling Demolition Notes

26. REVISE:  
TO READ: Note #3  
"3. Remove (E) glue-on ceiling tile in all classrooms in Bldg. C-1, C-3, and C-4."

At Key Notes

27. REVISE:  
TO READ: Key Note #16  
"16. Remove (E) walk-off mat and portion of (E) carpet for new walk-off mat installation (Typ.)"

28. REVISE:  
TO READ: Key Note #21  
"21. Remove (E) H.M. gate frame. Patch and repair as required. (See attached drawing AD2-A1, dated March 7, 2011) (Typ. Throughout each building in entire school)"

At Demolition Floor Plans

29. Key Note #4, "Remove existing wall finish down to wood stud framing", is applicable to all classrooms.

On SHEET A-2.1

At Demolition Floor Plan - Bldg. K1-A

30. Delete key note #19 symbol from Storage and Workroom.

31. At Key Note #20, leveling the floor is not needed due to demolition of existing concrete.
32. Key Note #28 is no longer applicable due to new ceiling work required by prior Addendum No. 1 scope.
33. REVISION: At General Notes for Room Modernization  
REVISION: Note #5  
TO READ: "5. Remove all (E) wall finishes and flooring as required for this entire building."
34. DELETE: Note #6 in its entirety.  
On SHEET A-2.4
35. REVISION: At General Notes for Room Modernization  
REVISION: Note #8  
TO READ: "8. Remove (E) glue-on ceiling tile in all classrooms in Bldg. C-5 and C-6."
36. REVISION: At Demolition Floor Plans  
REVISION: Key Note #16  
TO READ: "16. Remove (E) H.M. gate frame. Patch and repair as required. (See attached drawing AD2-A1, dated March 7, 2011) (Typ. Throughout each building in entire school)"  
On SHEET A-3.0
37. REVISION: At Reflected Ceiling Plan - Bldg. C-1 (Bldg. C-4, C-5, and C-6 Similar), and bldg. C-3  
REVISION: Per attached drawing AD2-A3 and AD2-A4, dated March 7, 2011.
38. Refer to attached drawing AD2-A5, dated March 7, 2011 for dimension of new soffit at Science Lab 71 and 72.  
On SHEET A-5.0
39. REVISION: At South Exterior Elevation of Bldg. C-2  
REVISION: Revise per attached drawing AD2-A6, dated March 7, 2011.
40. DELETE: At Key Note  
DELETE: Key Note # 2 in its entirety.  
On SHEET A-8.0
41. At Door Schedule  
At Door #72A, provide new solid core wood door per specifications.  
On SHEET A-9.1
42. REVISION: At Detail 4 - Typical Exterior Door  
REVISION: Detail per attached drawing AD2-A7, dated March 7, 2011.  
On SHEET A-9.2
43. REVISION: At Detail 12B - Typical Soffit  
REVISION: Detail per attached drawing AD2-A8, dated March 7, 2011.

On SHEET A-9.3

44. REVISE: At Detail 17 - Typical Suspended Ceiling  
Detail per attached drawing AD2-A11, dated March 7, 2011.

**MECHANICAL:**

On SHEET M-2.2 and M-2.3

45. At Construction Floor Plans  
For buildings C-1, C-3, C-4, C-5 and C-6: Provide drywell for each Bard wall mounted units for condensate drain. Drywell shall be located in the grass area south of the concrete walkway. Connect new condensate drain to drywell. See attached drawing AD2-M1, dated March 7, 2011. If existing drywell is already in place, contractor shall clean drywell of debris and mud and flush with water.

On SHEET M-3.0

46. REVISE:  
TO READ: At Construction Notes  
#7  
"7. 3/4" condensate drain down thru roof. See detail 1 in P-2.3 for continuation."

**PLUMBING:**

On SHEET P-2.3

47. At Construction Floor Plans  
Extend 1/2" hot water and 1-1/2" waste lines from Prep. Soom sink to dishwasher. Install air gap fitting on sink in Prep. Rooms 74 and 76 at Bldg. K-1A and Prep. Rooms 54 and 56 at Bldg. C-2.

**ELECTRICAL:**

48. REPLACE: The following sheets with attached Addendum No. 2 revision drawings, dated March 7, 2011.

E-1.0 SYMBOL LIST, FIXTURE SCHEDULE AND NOTES  
E-1.1 FIRE ALARM SCHEDULES, RISER AND BLOCK DIAGRAMS  
E-1.2 SINGLE LINE DIAGRAM AND FEEDER LOAD SCHEDULE  
E-1.3 PANEL SCHEDULES  
E-2.0 ELECTRICAL SITE PLAN  
E-3.1 DEMOLITION FLOOR PLAN - BLDGS. C-1, C-2, C-3, AND C-4  
E-3.3 DEMOLITION FLOOR PLAN - BLDGS. C-5 AND C-6  
E-4.1 LIGHTING FLOOR PLANS - BLDGS. C-1, C-2, C-3, AND K1-A  
E-4.2 LIGHTING FLOOR PLANS - BLDGS. C-5 AND C-6  
E-5.2 POWER FLOOR AND ROOF PLANS - BLDGS. C-2 AND K1-A  
E-7.1 FIRE ALARM FLOOR PLANS - BLDGS. C-2, C-3, AND K1-A  
E-7.2 FIRE ALARM FLOOR PLANS - BLDGS. C-1 AND C-4  
E-7.3 FIRE ALARM FLOOR PLANS - BLDGS. C-5 AND C-6

**LANDSCAPE:**

49. REPLACE: The following sheets with attached Addendum No. 2 revision drawings, dated March 11, 2011.

L-1.0 IRRIGATION PLAN - AREA A  
L-1.1 IRRIGATION PLAN - AREA B  
L-2.0 PLANTING PLAN - AREA A  
L-2.1 PLANTING PLAN - AREA B

**List of attached drawings:**

- C-1.0 SITE GRADING AND DRAINAGE PLAN - AREA A
- C-1.1 SITE GRADING AND DRAINAGE PLAN - AREA B
- C-1.2 GRADING AND DRAINAGE ENLARGEMENT PLAN
- C-1.3 GRADING AND DRAINAGE DETAILS
- C-2.0 SITE CONSTRUCTION PLAN - AREA A
- C-2.1 SITE CONSTRUCTION PLAN - AREA B
- C-2.2 SITE CONSTRUCTION ENLARGEMENT PLAN
- C-2.3 SITE CONSTRUCTION DETAILS
- C-2.4 SITE CONSTRUCTION DETAILS
  
- A-0.1 SITE DEMOLITION PLAN - AREA A
- A-0.2 SITE DEMOLITION PLAN - AREA B
  
- E-1.0 SYMBOL LIST, FIXTURE SCHEDULE AND NOTES
- E-1.1 FIRE ALARM SCHEDULES, RISER AND BLOCK DIAGRAMS
- E-1.2 SINGLE LINE DIAGRAM AND FEEDER LOAD SCHEDULE
- E-1.3 PANEL SCHEDULES
- E-2.0 ELECTRICAL SITE PLAN
- E-3.1 DEMOLITION FLOOR PLAN - BLDGS. C-1, C-2, C-3, AND C-4
- E-3.3 DEMOLITION FLOOR PLAN - BLDGS. C-5 AND C-6
- E-4.1 LIGHTING FLOOR PLANS - BLDGS. C-1, C-2, C-3, AND K1-A
- E-4.2 LIGHTING FLOOR PLANS - BLDGS. C-5 AND C-6
- E-5.2 POWER FLOOR AND ROOF PLANS - BLDGS. C-2 AND K1-A
- E-7.1 FIRE ALARM FLOOR PLANS - BLDGS. C-2, C-3, AND K1-A
- E-7.2 FIRE ALARM FLOOR PLANS - BLDGS. C-1 AND C-4
- E-7.3 FIRE ALARM FLOOR PLANS - BLDGS. C-5 AND C-6
  
- L-1.0 IRRIGATION PLAN - AREA A
- L-1.1 IRRIGATION PLAN - AREA B
- L-2.0 PLANTING PLAN - AREA A
- L-2.1 PLANTING PLAN - AREA B
  
- AD2-A1 Typical End Elevation of Wing Wall
- AD2-A2 Typical New Walk-Off Mat Layout
- AD2-A3 Reflected Ceiling Plan at Bldg. C-4 (Bldg. C-5 and Bldg. C-6 Similar)
- AD2-A4 Partial Reflected Ceiling Plan
- AD2-A5 Typical Exterior Door
- AD2-A6 Partial Exterior Elevation - Bldg. C-2
- AD2-A7 Typical Exterior Door
- AD2-A8 Typical Soffit
- AD2-A9 Drinking Fountain
- AD2-A10 End Trim at Drinking Fountain
- AD2-A11 Typical Suspended Ceiling
  
- AD2-M1 Typical Drywell



END OF ADDENDUM NO. 2

Henry Woo Architects, Inc.

**SECTION 08100  
HOLLOW METAL DOORS**

The requirements of the General Conditions, Supplementary General Conditions, and Division 1 apply to this section.

**PART 1 : GENERAL**

- 1.01 Scope: Furnish and install Hollow Metal Doors as indicated on drawings and as specified in this section.
- 1.02 Related Work Specified Elsewhere::
- A. Steel Hollow Metal Frames - Section 08110
  - B. Finish Hardware - Section 08710
- 1.03 Submittals:
- A. Shop Drawings and Samples: Provide complete construction and erection details for the Architect's approval prior to fabrication. Furnish samples of construction section of the metal doors and frames completely finished and equipped as herein specified.
- 1.04 Inspection:
- A. Hardware Inspection: The installation of doors and hardware shall be subject to inspection and approval of the hardware supplier. Furnish a written statement from the hardware supplier. Furnish a written statement from the hardware supplier stating that the hardware has been installed in accordance with the manufacturer's recommendations.
- 1.05 Quality Assurance:
- A. Welding: Conform to applicable standards of American Welding Society for high grade hollow metal work, with exposed beads ground smooth.

**PART 2: PRODUCTS**

- 2.01 Materials:
- A. Steel: In U.S. Standard gauges herein specified prime quality cold rolled, pickled, annealed, stretcher leveled steel; free from scale, pitting, surface defects.
  - B. Soundproofing Materials: For non-labeled doors; fiberboard, or other approved material to reduce metallic ring, act as insulator.
  - C. Labeled Flush Door Core: Kraft Honeycomb meeting UL requirements.
- 2.02 Hollow Metal Doors:
- A. Flush doors shall be constructed from two steel sheets of not less than 16 gauge galvanized-bonderized steel, free from scale, pitting and surface defects. Doors shall be as manufactured by Steelcraft, L series or accepted equal (Doors over 36" wide or exceed 7' high shall be of B series.) All doors shall be constructed to have a continuous mechanical interlocking seam on the vertical edge. No visible welds or metal filler shall be used on door edges. Internal construction to consist of 18 gauge vertical channels, spaced not over 8 inches o.c. extending vertically through full door height, uniformly spot welded to mated pans. Provide filler channels to

close tops of exterior doors flush for weather-proofing. Make doors free from metallic ring by providing filler materials specified above.

- B. Cut-outs as required by door details, provide openings for glazing uniformly located. All cut-outs to be made at the factory.
- C. Moldings: For open lights, drawn from 20 gauge steel to Overly design No. 1000; miter corners, weld into integral frame; make one frame on inside of door removable, outside welded in place; attach removable frame with countersunk oval head machine screws, not over 16 inch centers. Shop glaze all view windows indicated with 1/4 inch thick, clear, polished MISCO wire glass; bed in glazing compound.
- D. Astragals: Astragals shall extend full height on active leaf of pairs of doors.

### **PART 3 : EXECUTION**

#### **3.01 Installation:**

- A. All work shall be shop fabricated to required profiles by forming welding; with arrises, edges straight, sharp, unless covered or bull-nosed. Fit, fabricate accurately with corners, hairline joints, surfaces. Surfaces free from warp, wave, buckle or other defects.
- B. Hardware Reinforcement: Provide concealed reinforcement of sheet or bar steel to receive mortise type hardware; drill tap to template requirements for field installation. Manufacturer shall not be required to drill or tap for surface applied hardware, closures or push plates.

Reinforcement shall include:

3/16" hinge plates-frames 8 gauge minimum doors  
12 gauge lock strike reinforcement  
12 gauge reinforcement for surface applied hardware  
14 gauge box minimum 6" and 20" long reinforcement for closer  
24 gauge galvanized steel plaster guards at mortise hardware locations.

- C. Anchors: Provide framing with 16 gauge anchors as required.

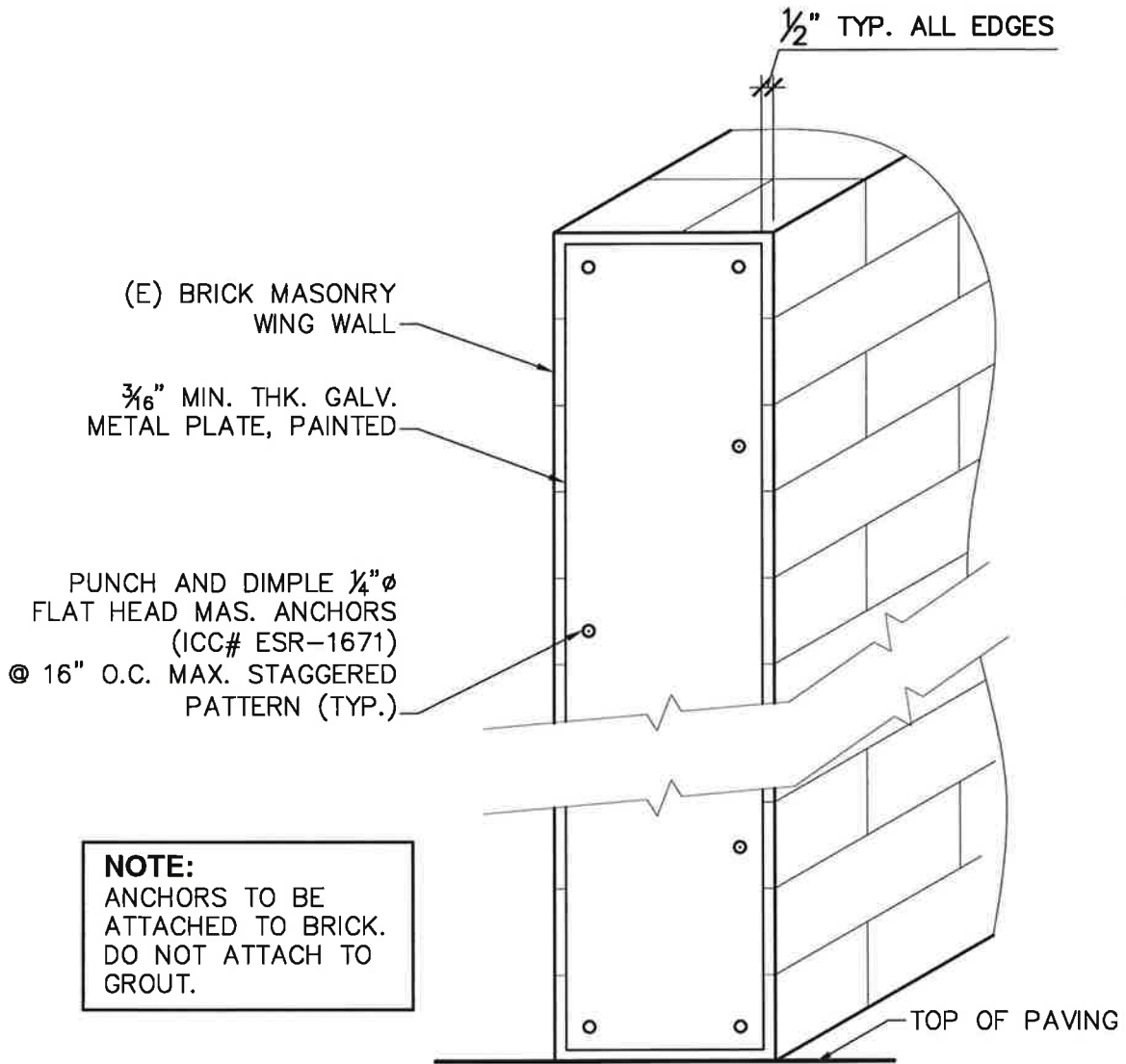
#### **3.02 Erection:**

- A. Erection of all metal doors and frames is to be plumb, true-to-line and secure to adjoining construction. Accurately hang doors. Coordinate with Finish Hardware section, Block and Lathing and Plastering sections of the specifications.

#### **3.03 Finish:**

- A. Cleaning: After assembly, clean thoroughly, removing all rust, scale, grease, oil, rough spots. Grind welded joints smooth; fill flush with mineral filler to conceal seams.
- B. Shop Coating: Give all material one coat (minimum one mil thickness) rust-inhibitive primer, Andrew Brown Synchro Red Primer.
- C. Protection: Provide adequate coverings and blocking to protect doors and frames from the elements during transit and storage at the site.

END OF SECTION



**TYPICAL END ELEVATION OF WING WALL**

SCALE: N.T.S.

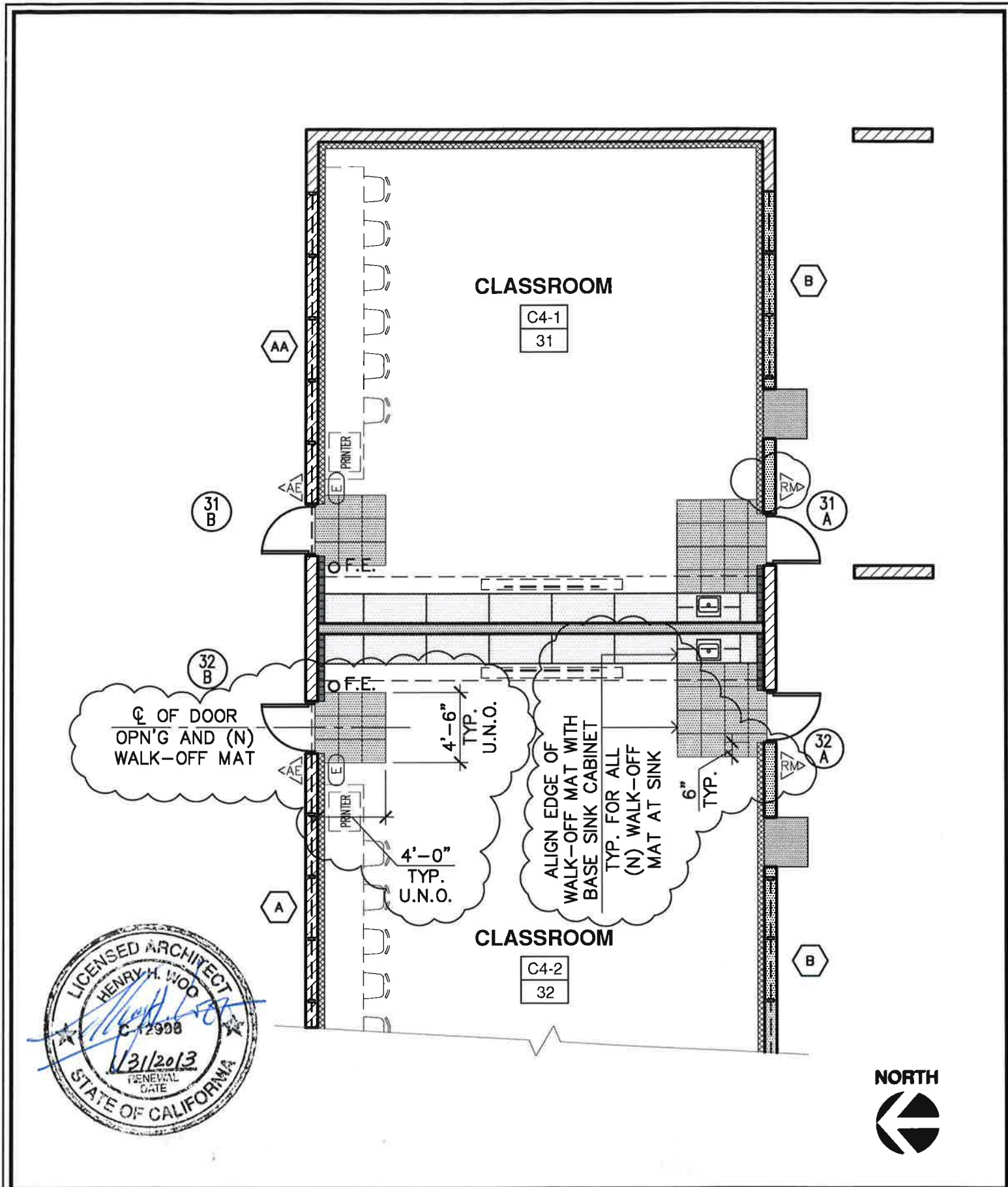
PROJECT TITLE:  
ALVARADO I.S. PARTIAL  
MODERNIZATION

DSA NO.: 03-112358  
PROJECT NO.: 108RSD13  
HENRY WOO ARCHITECTS, INC.

FILE NO.: 19-92

**AD2-A1**

DATE: 3/7/2011



**PARTIAL FLOOR PLAN**

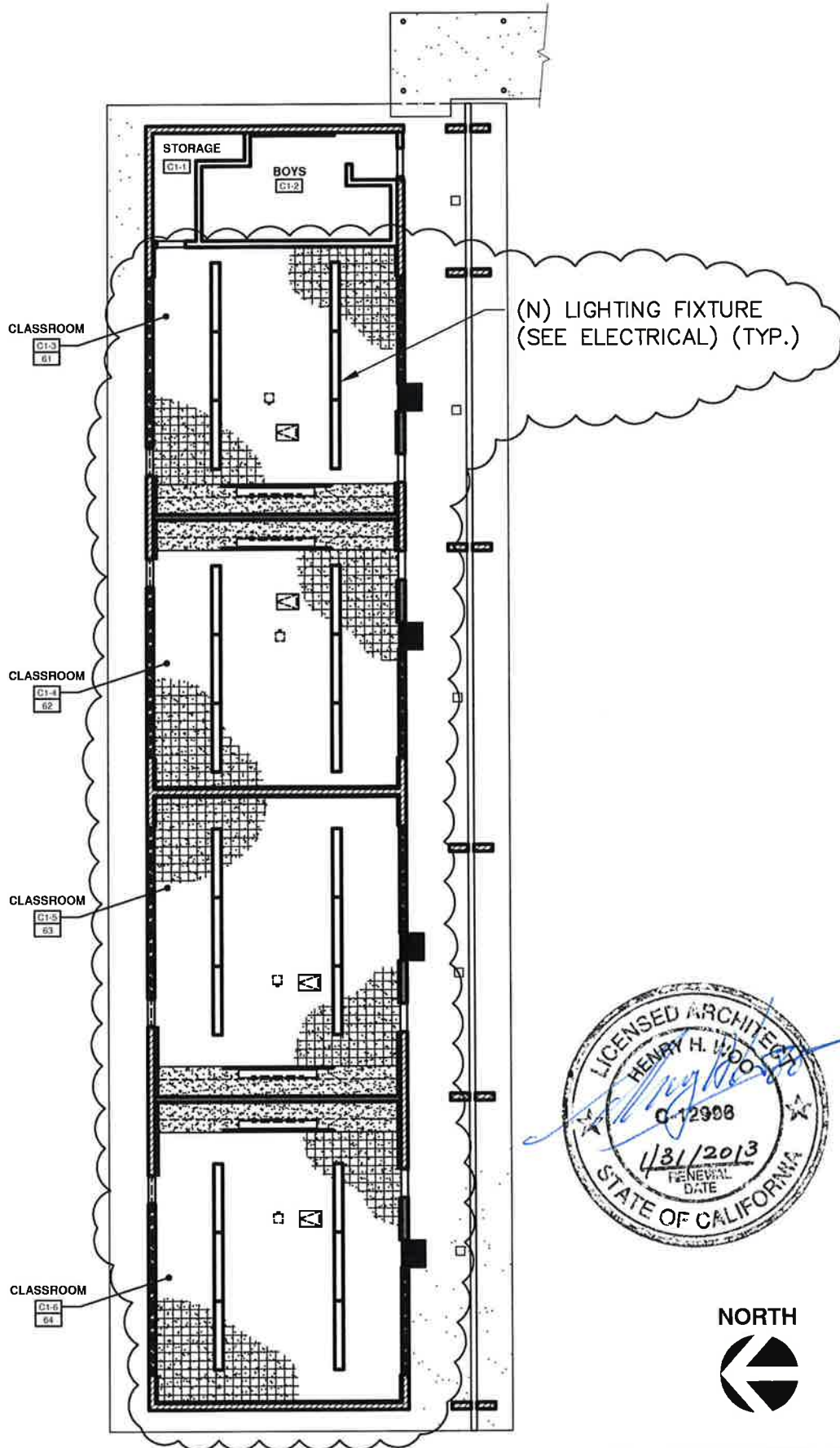
SCALE: N.T.S.

PROJECT TITLE:  
**ALVARADO I.S. PARTIAL  
 MODERNIZATION**

DSA NO.: 03-112358 FILE NO.: 19-92  
 PROJECT NO.: 108RSD13  
 HENRY WOOD ARCHITECTS, INC.

**AD2-A2**

DATE: 3/7/2011



**TYPICAL REF. CLG. PLAN - BLDG. C-1 (BLDG. C-4, C-5, AND C-6 SIMILAR)**

**(REF. 4/A-3.0)**

SCALE: N.T.S.

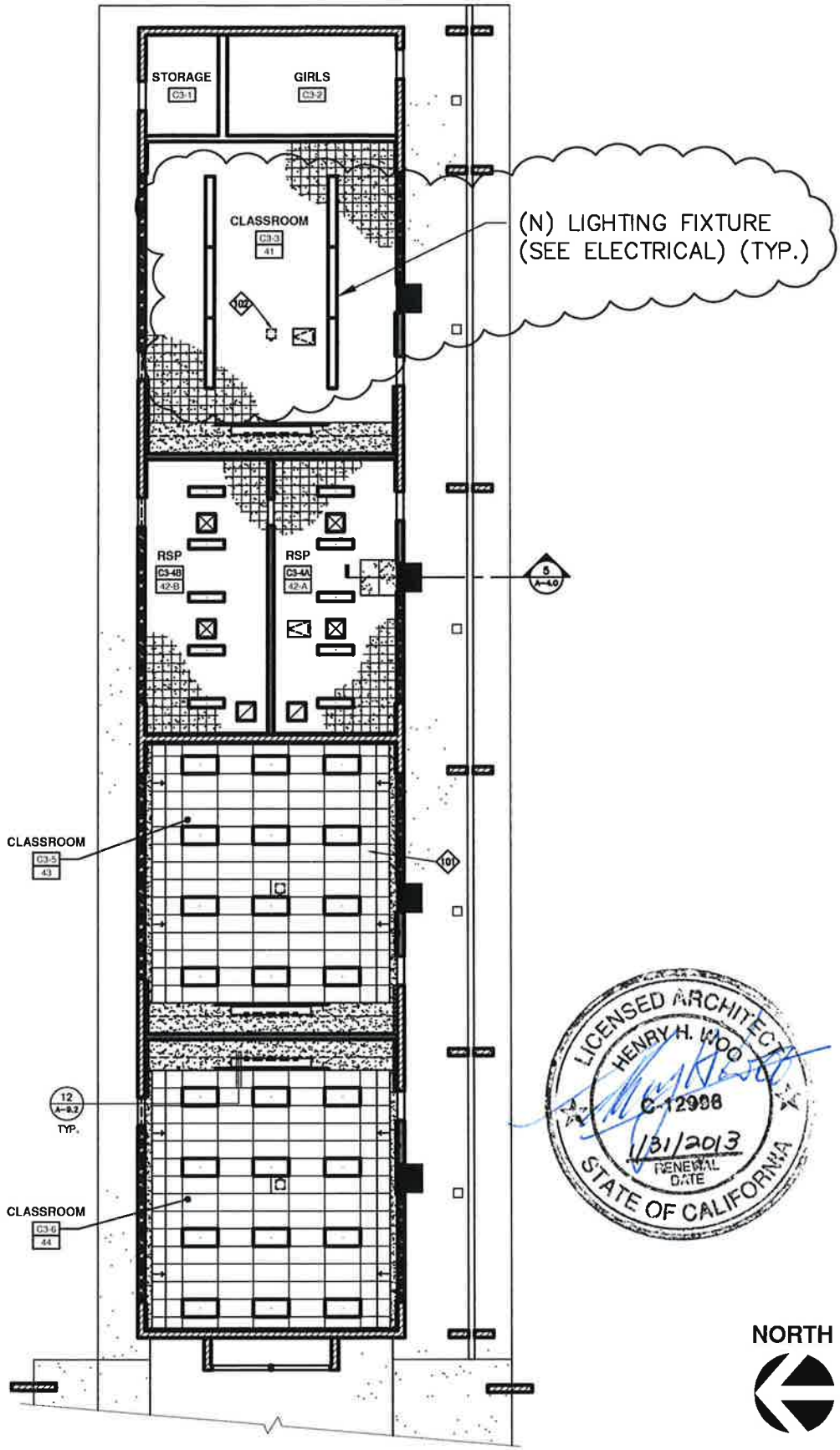
PROJECT TITLE:  
**ALVARADO I.S. PARTIAL  
 MODERNIZATION**

DSA NO.: 03-112358  
 PROJECT NO.: 108RSD13  
 HENRY WOO ARCHITECTS, INC.

FILE NO.: 19-92

**AD2-A3**

DATE: 3/7/2011



**TYPICAL REF. CLG. PLAN - BLDG. C-3**

**(REF. 4/A-3.0)**

SCALE: N.T.S.

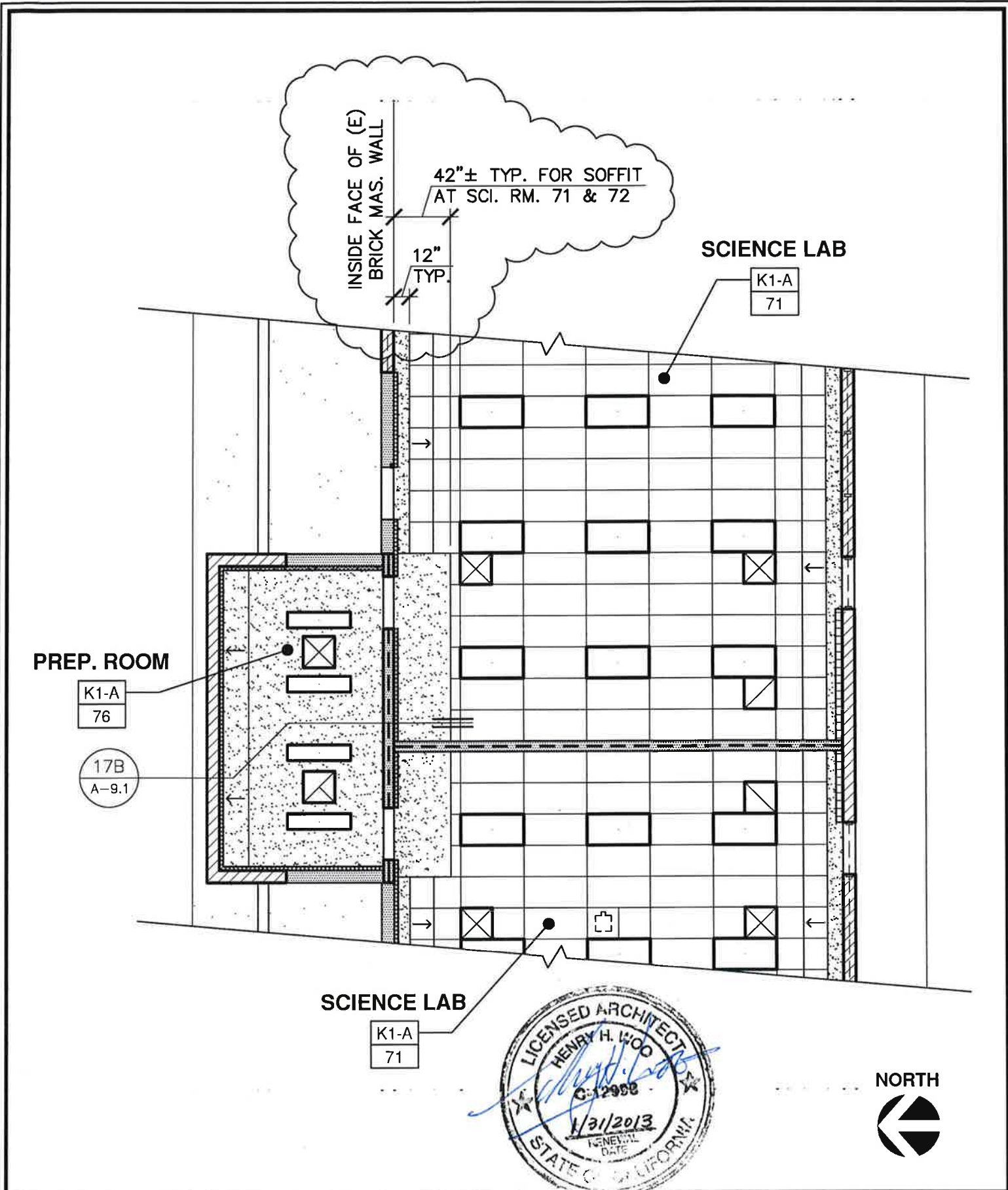
PROJECT TITLE:  
**ALVARADO I.S. PARTIAL  
 MODERNIZATION**

DSA NO.: 03-112358  
 PROJECT NO.: 108RSD13  
 HENRY WOO ARCHITECTS, INC.

FILE NO.: 19-92

**AD2-A4**

DATE: 3/7/2011



**PARTIAL REF. CEILING PLAN**

(REF. 4/A-3.0)

SCALE: N.T.S.

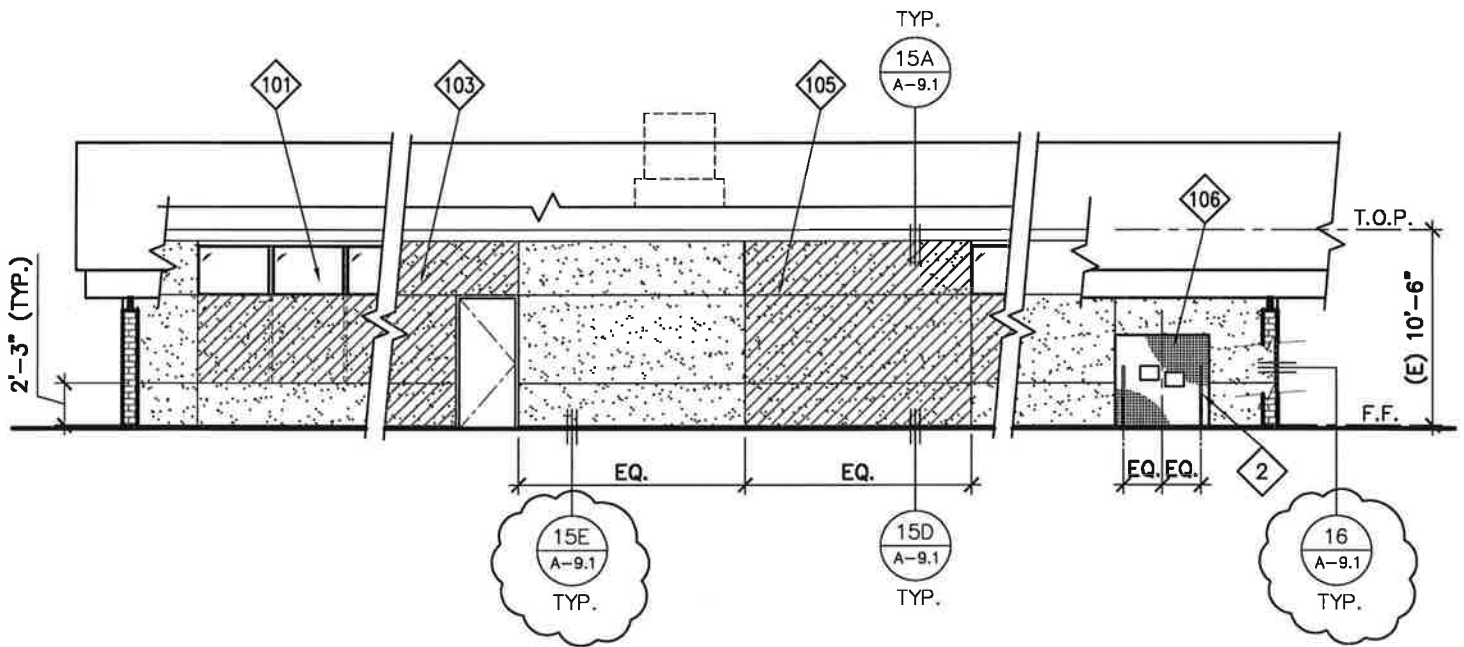
PROJECT TITLE:  
**ALVARADO I.S. PARTIAL  
 MODERNIZATION**

DSA NO.: 03-112358  
 PROJECT NO.: 108RS13  
**HENRY WOOD ARCHITECTS, INC.**

FILE NO.: 19-92

**AD2-A5**

DATE: 3/7/2011



**PARTIAL EXTERIOR ELEVATION - BLDG. C-2**

**(REF. 4A/A-5.0)**

SCALE: N.T.S.

PROJECT TITLE:  
**ALVARADO I.S. PARTIAL  
 MODERNIZATION**

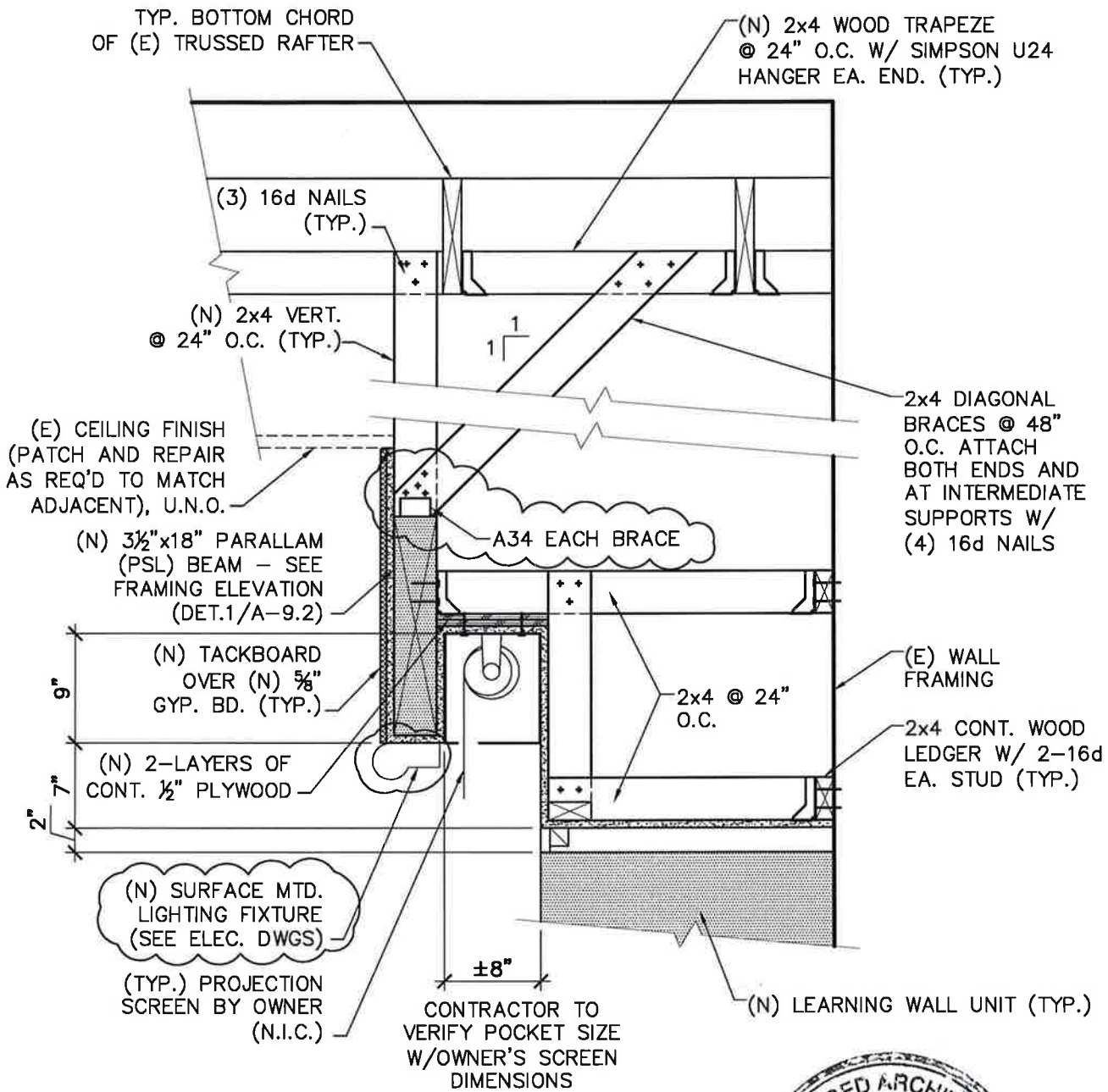
DSA NO.: 03-112358  
 PROJECT NO.: 108RSD13  
 HENRY WOO ARCHITECTS, INC.

FILE NO.: 19-92

**AD2-A6**

DATE: 3/7/2011





**TYP. SECTION @ PROJECTION SCREEN POCKET**

**B**

**TYPICAL SOFFIT**

**(REF. 12B/A-9.2)**

SCALE: N.T.S.

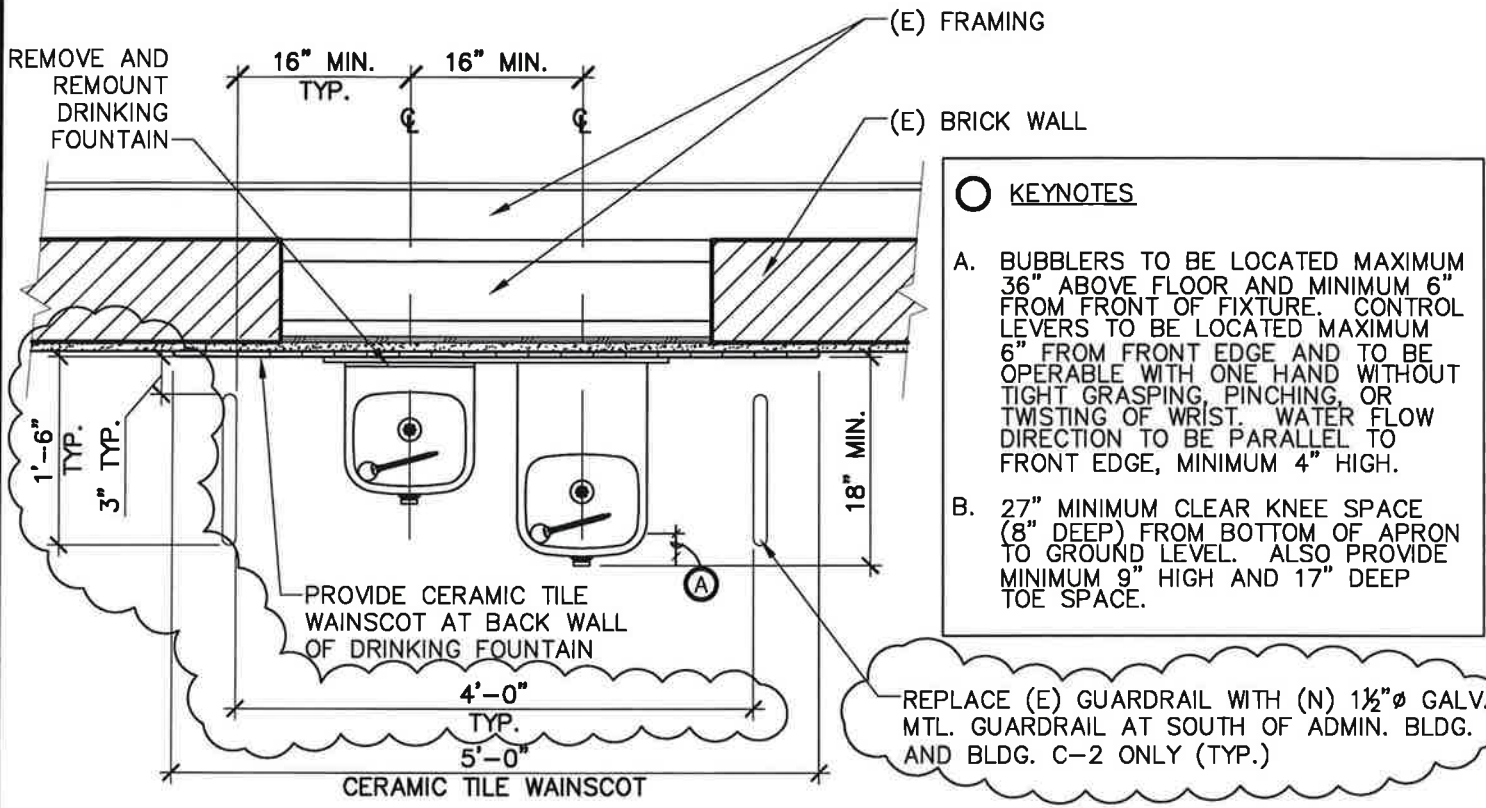
PROJECT TITLE:  
ALVARADO I.S. PARTIAL  
MODERNIZATION

DSA NO.: 03-112358  
PROJECT NO.: 108RSD13  
HENRY WOO ARCHITECTS, INC.

FILE NO.: 19-92

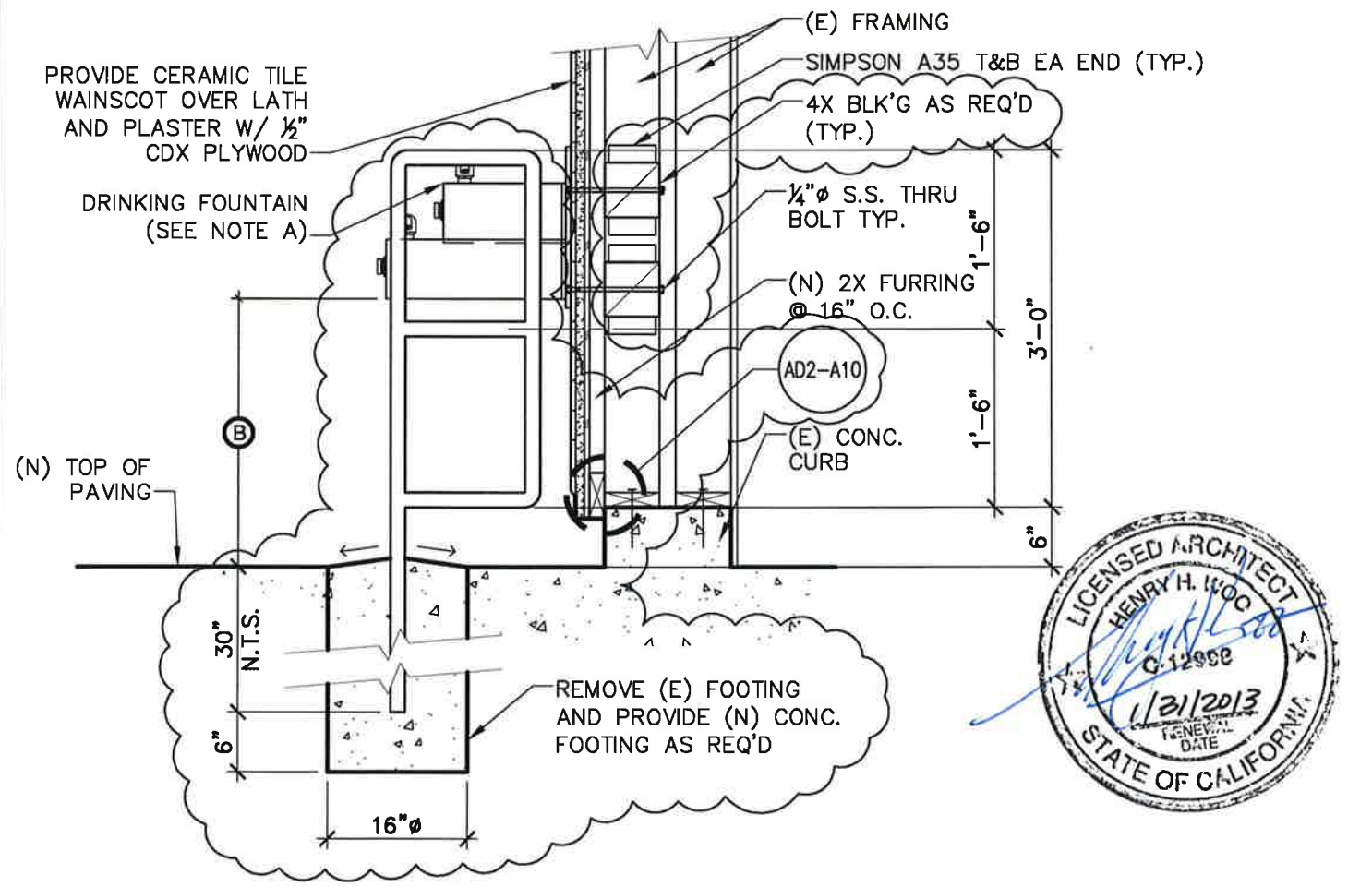
**AD2-A8**

DATE: 3/7/2011

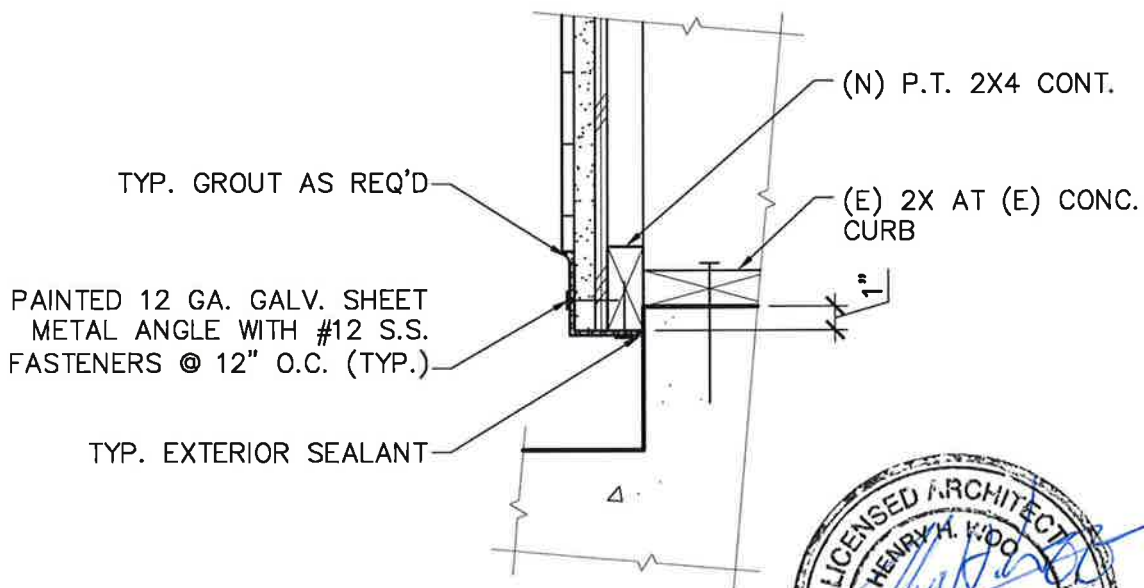


- KEYNOTES**
- A. BUBBLERS TO BE LOCATED MAXIMUM 36" ABOVE FLOOR AND MINIMUM 6" FROM FRONT OF FIXTURE. CONTROL LEVERS TO BE LOCATED MAXIMUM 6" FROM FRONT EDGE AND TO BE OPERABLE WITH ONE HAND WITHOUT TIGHT GRASPING, PINCHING, OR TWISTING OF WRIST. WATER FLOW DIRECTION TO BE PARALLEL TO FRONT EDGE, MINIMUM 4" HIGH.
  - B. 27" MINIMUM CLEAR KNEE SPACE (8" DEEP) FROM BOTTOM OF APRON TO GROUND LEVEL. ALSO PROVIDE MINIMUM 9" HIGH AND 17" DEEP TOE SPACE.

REPLACE (E) GUARDRAIL WITH (N) 1 1/2" Ø GALV. MTL. GUARDRAIL AT SOUTH OF ADMIN. BLDG. AND BLDG. C-2 ONLY (TYP.)



<b>DRINKING FOUNTAIN</b>		(REF. 16/A-9.2)	SCALE: N.T.S.
PROJECT TITLE: ALVARADO I.S. PARTIAL MODERNIZATION	DSA NO.: 03-112358 PROJECT NO.: 108RSD13 HENRY WOO ARCHITECTS, INC.	FILE NO.: 19-92	<b>AD2-A9</b> DATE: 3/7/2011



**END TRIM AT DRINKING FOUNTAIN**

**(REF. 16/A-9.2)**

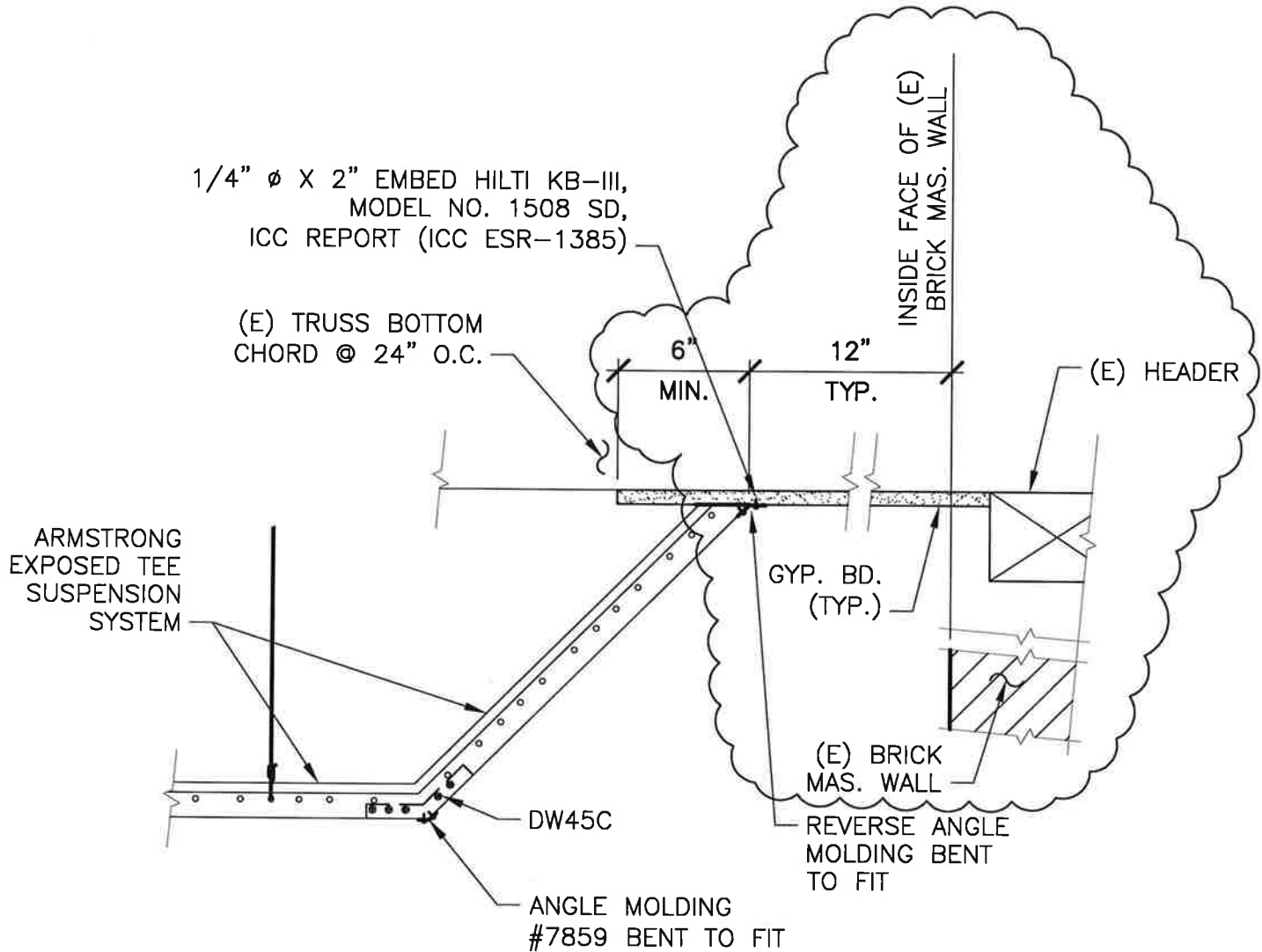
SCALE: 1 1/2" = 1'-0"

PROJECT TITLE:  
**ALVARADO I.S. PARTIAL  
 MODERNIZATION**

DSA NO.: **03-112358** FILE NO.: **19-92**  
 PROJECT NO.: **108RSD13**  
**HENRY WOOD ARCHITECTS, INC.**

**AD2-A10**

DATE: 3/9/2011



**NOTE:**

1. VERIFY SPECIFIC HANGER WIRE LOCATIONS PER CONSTRUCTION CONDITIONS AND CODES.
2. BRACE CEILING TRANSITIONS WHERE NEEDED OR REQ. BY LOCAL CODE. CANTELEVER CALCULATIONS TO BE SUPPLIED BY PROJECT ENGINEER.



**TYPICAL SUSPENDED CEILING**

(REF. 17/A-9.3)

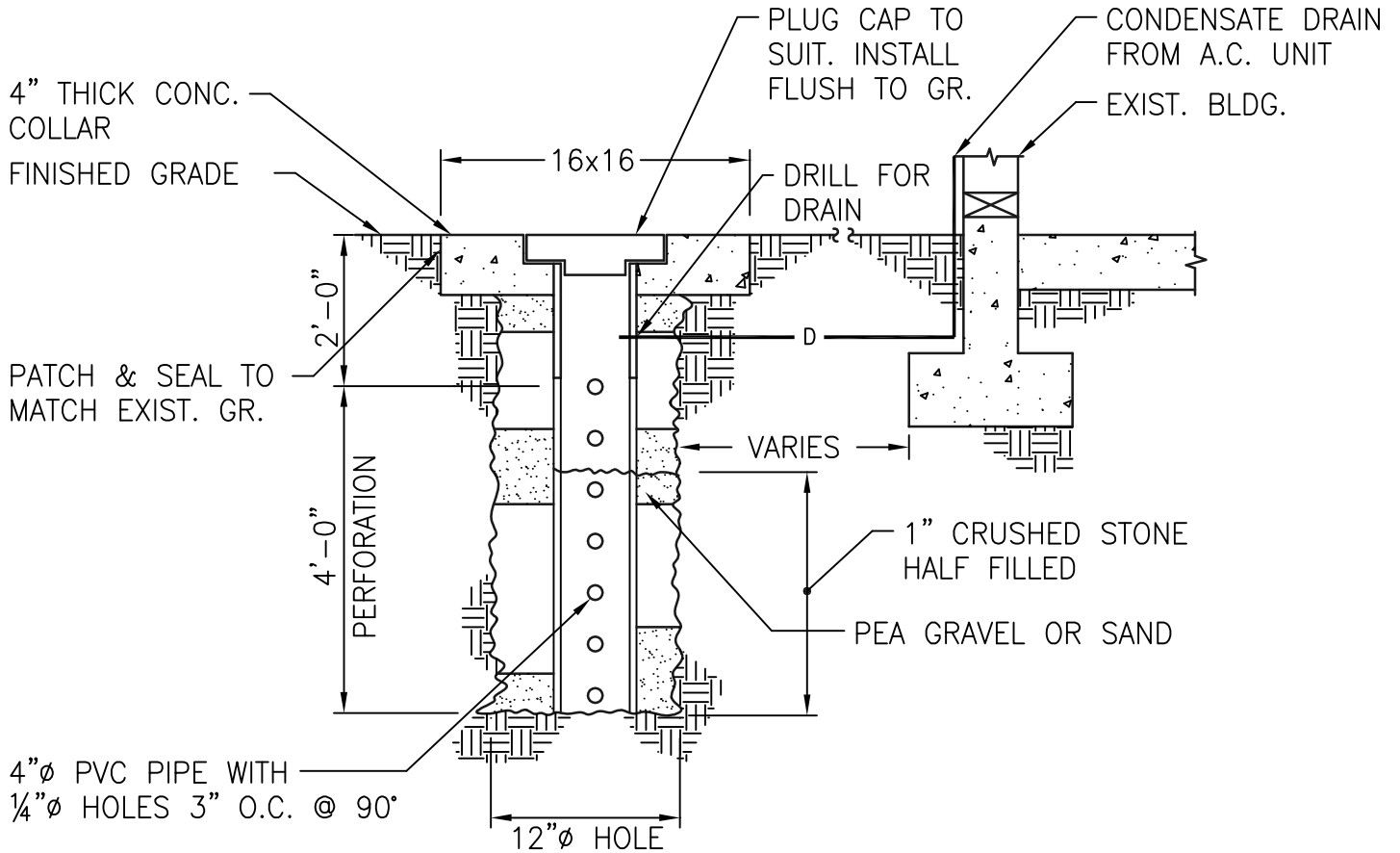
SCALE: N.T.S.

PROJECT TITLE:  
ALVARADO I.S. PARTIAL  
MODERNIZATION

DSA NO.: 03-112358 FILE NO.: 19-92  
PROJECT NO.: 108RSD13  
HENRY WOO ARCHITECTS, INC.

**AD2-A11**

DATE: 3/7/2011



**DRYWELL DETAIL**

SCALE: N.T.S.

PROJECT TITLE:  
**ALVARADO I.S. PARTIAL  
 MODERNIZATION**

DSA NO.03-112358 FILE NO:9-92  
 PROJECT NO:08RSD13  
 HENRY WOO ARCHITECTS, INC.

**AD2-M1** DATE: 3/7/2011